



REDPATH FLEET OF RAISE DRILLS

Extended Height	163" (4.14 m)
Footprint Width	87" (2.2 m)
Footprint Depth	89" (2.26 m)
Weight	46,978 lbs (21,309 kg)
Thrust System	
Maximum Upream Force	N/A
Maximum Conventional Ream Force	1,130,000 lbs (5,026 kN)
Maximum Downream Force	666,000 lbs (2,962 kN)
Rotation System	
Reaming Torque	225,000 ft / lbs (305 kN.m)
Nominal Parameters	
Pilot Hole Diameter	13 3/4" (349 mm)
Drill Pipe Diameter	12 7/8" (327 mm)
Hole Diameter Downream	48" (1.22 m)
Hole Diameter Upream	N/A
Hole Diameter Conventional	13' (4 m)
Raise Length Conventional	2000' (609 m)
Raise Angle	45 - 90°
Options	
Redtrax Transporter	Yes
Erector System	Yes

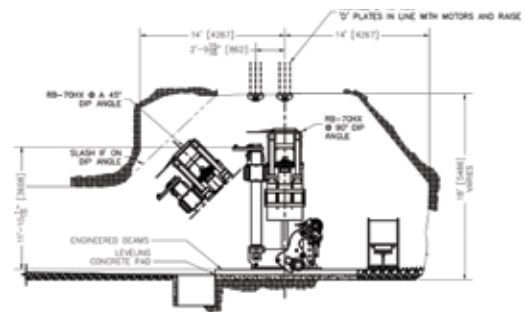
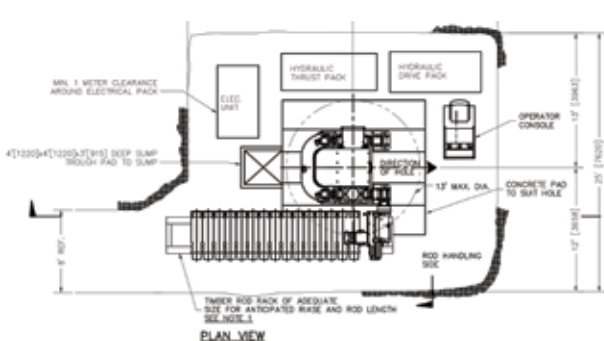


REDTRAX COMPATIBLE

REDBORE 70

The Redbore 70 is a powerful and compact raise drill designed to fit in smaller excavations. The Redbore 70 can be configured to complete 48" (1.22 m) diameter downreaming. Nominal capacities range up to 13' (4 m) diameters with lengths of raises up to 2,000' (609 m).

This makes the Redbore 70 an ideal candidate for mid-size ventilation raises and material handling raises of all kinds.



* Electrical systems built to suit regional requirements

Note: Drill specifications including thrust, torque, weights and dimensions are approximate and may vary from those provided.

Tel.: 1.705.474.2461 | Info.raisedrills@redpathmining.com | redpathmining.com