



REDPATH FLEET OF RAISE DRILLS

Extended Height	156" (3.97 m)
Footprint Width	56" (1.42 m)
Footprint Depth	53" (1.34 m)
Weight	15,705 lbs (7,139 kg)
Thrust System	
Maximum Upream Force	N/A
Maximum Conventional Ream Force	400,000 lbs (1,915 kN)
Maximum Downream Force	308,000 lbs (1,370 kN)
Rotation System	
Reaming Torque	68,000 ft / lbs (92.1 kN.m)
Nominal Parameters	
Pilot Hole Diameter	11" (279 mm)
Drill Pipe Diameter	10" (254 mm)
Hole Diameter Downream	28 1/2" (724 mm)
Hole Diameter Upream	N/A
Hole Diameter Conventional	84" (2.13 m)
Raise Length Conventional	600' (183 m)
Raise Angle	45 - 90°
Options	
Redtrax Transporter	Yes
Erector System	Yes

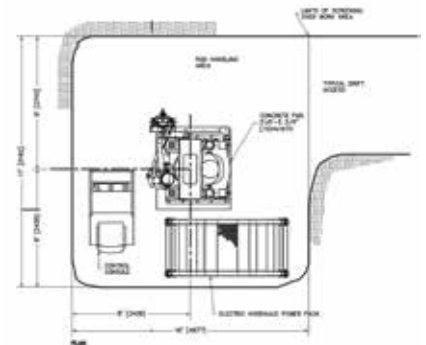
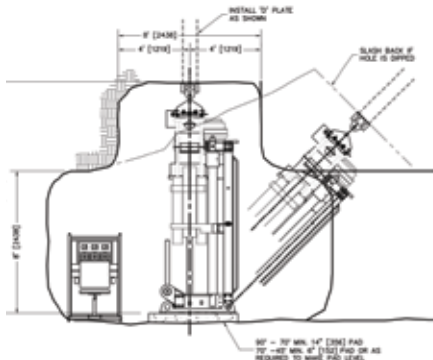


REDTRAX COMPATIBLE

REDBORE 50

The Redbore 50 has been designed as a mid-capacity drill whose role is to replace much larger equipment. The Redbore 50 has the same footprint as the Redbore 40 and requires only slightly more back height. The Redbore 50, electric or hydraulic version, can be configured to downream 28 1/2" (724 mm) diameter holes.

Nominal capacities range from 84" (2.13 m) diameters with lengths of raises up to 600' (183 m).



* Electrical systems built to suit regional requirements
 * Deflectors are optional, must be added to overall height of machine
 * Upream values are nominal, diameter and length are site-specific
 Note: Drill specifications including thrust, torque, weights and dimensions are approximate and may vary from those provided.