



# REDPATH FLEET OF RAISE DRILLS

Extended Height	140" (3.55 m)
Footprint Width	56" (1.42 m)
Footprint Depth	51" (1.29 m)
Weight	11,556 lbs (5,253 kg)
<b>Thrust System</b>	
Maximum Upream Force	230,000 lbs (1,023 kN)
Maximum Conventional Ream Force	230,000 lbs (1,023 kN)
Maximum Downream Force	168,000 lbs (747 kN)
<b>Rotation System</b>	
Reaming Torque	38,000 ft / lbs (51.52 kN.m)
<b>Nominal Parameters</b>	
Pilot Hole Diameter	9" (228.6 mm)
Drill Pipe Diameter	8" (203.2 mm)
Hole Diameter Downream	28 1/2" (724 mm)
Hole Diameter Upream	42" (1.06 m)
Hole Diameter Conventional	60" (1.52 m)
Raise Length Conventional	500' (152 m)
Raise Angle	45 - 90°
<b>Options</b>	
Redtrax Transporter	Yes
Erector System	Yes

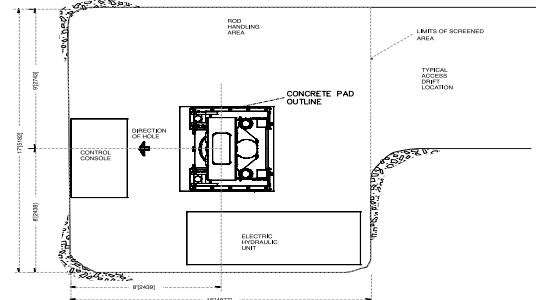
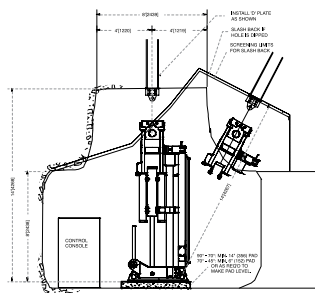


REDTRAX COMPATIBLE

## REDBORE 40

The Redbore 40 is a small and compact drill designed primarily for production slot programs. The drill can be configured for downreaming at 28 1/2" (724 mm), eliminating the need for bottom-hole access. Nominally, the machine is capable of reaming 60" (1.52 m) diameter holes, up to 500' (152 m) in length.

Designed and engineered in 1987, the Redbore 40 has enjoyed nearly 30 years of continual improvements derived from field experience. The machine's simple and straightforward hydraulics make it an ideal candidate, delivering value, where uptime and productivity are important.



\* Electrical systems built to suit regional requirements  
 \* Deflectors are optional, must be added to overall height of machine  
 \* Upream values are nominal, diameter and length are site-specific  
 Note: Drill specifications including thrust, torque, weights and dimensions are approximate and may vary from those provided.